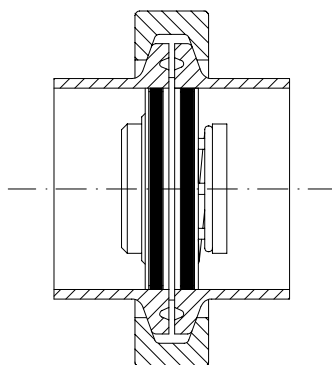
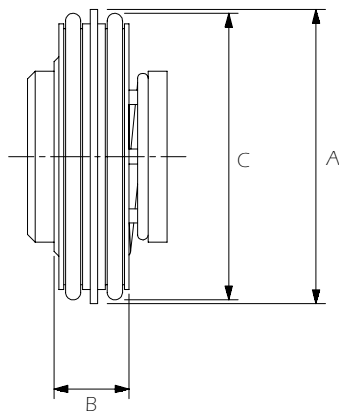
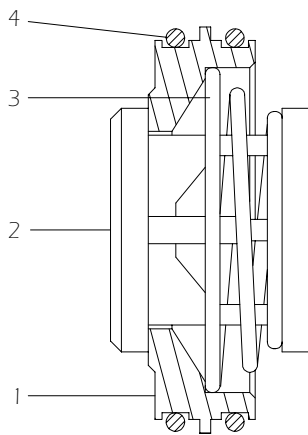


# Check Valve - Cartridge Type

HCV-01  
01/01



Installed valve

## Check Valve - Cartridge Type

The check valve - cartridge type, is designed to fit between a single sanitary clamp fitting, sealing on the ID of the tube using FDA approved EPDM O-rings. The compact 316 stainless steel design is suitable for a wide range of duties in steam and condensate service, including pressure relieving and anti-vacuum applications.

When used with the HST30 clean steam trap range the valve can be fitted directly into the outlet of 3/4" and 1" Tri-Clamp® compatible models, offering a simple and effective check valve solution where the possibility of reverse flow exists.

The cartridge check valve is also available with a number of soft seat and spring options, details of which are available upon request.

### Product specification

Standard Imperial tube sizes*	3/4", 1", 1-1/2" & 2"
Fitting type	Tri-Clamp® compatible
Maximum temperature	150°C
Opening pressure**	35 mbar

\*2-1/2" - 4" sizes available upon request

\*\*8, 100 and 240 mbar spring options available upon request

### Materials of construction

1.	Body	316 Stainless steel
2.	Valve head	316 Stainless steel*
3.	Spring	316 Stainless steel
4.	O-Ring	EPDM(FDA compliant)**

\*Range of soft seat materials available upon request

\*\*other materials available upon request

### Dimensions(mm)

	A	B	C	Orifice
3/4"	19.0	14.3	15.9	8.8
1"	25.4	15.1	22.1	11.8
1-1/2"	38.1	15.1	34.8	22.6
2"	50.8	19.9	47.5	28.8

### Use with non-Imperial tube sizes and fittings

The valve will fit in various sizes of tube and fittings providing the ID of the tube/fitting matches the dimension C stated in the table.